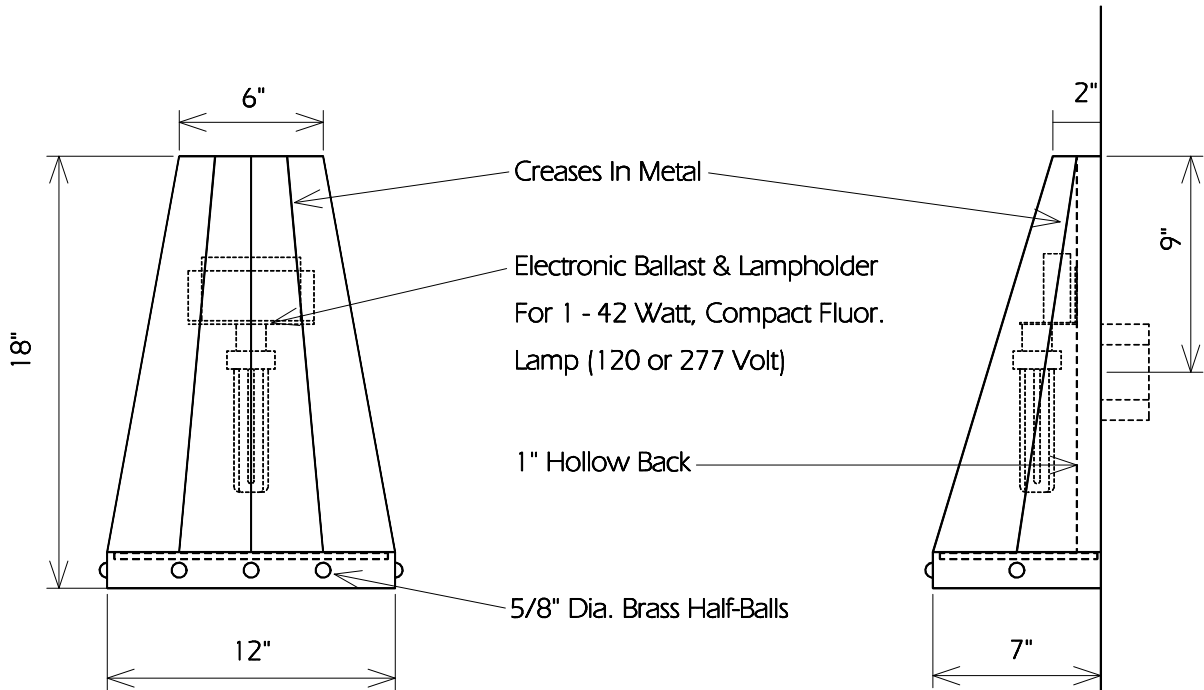


Solid Top (No Uplight)

TOP



Creases In Metal

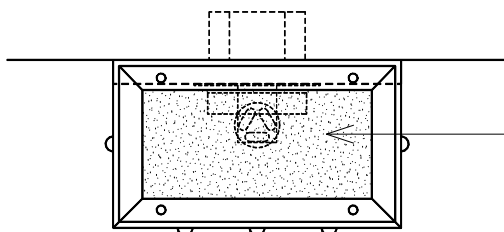
Electronic Ballast & Lampholder
For 1 - 42 Watt, Compact Fluor.
Lamp (120 or 277 Volt)

1" Hollow Back

5/8" Dia. Brass Half-Balls

FRONT

SIDE



Optional Removable Bottom Of White Acrylic
In Metal Frame

BOTTOM

This Fixture Is Full Cut-Off & Fully Shielded

TWO HILLS STUDIO®

Fine Lighting & Decorative Metal Work www.twohillsstudio.com

2706 SOUTH LAMAR BOULEVARD AUSTIN, TEXAS 78704 512-707-7571 FAX 512-707-7524

WALL SCONCE DL8

Fixture Is Appropriate For:

- Wet Locations As Shown
- Damp Locations As Shown
- Dry Locations As Shown
- U.L. Approved